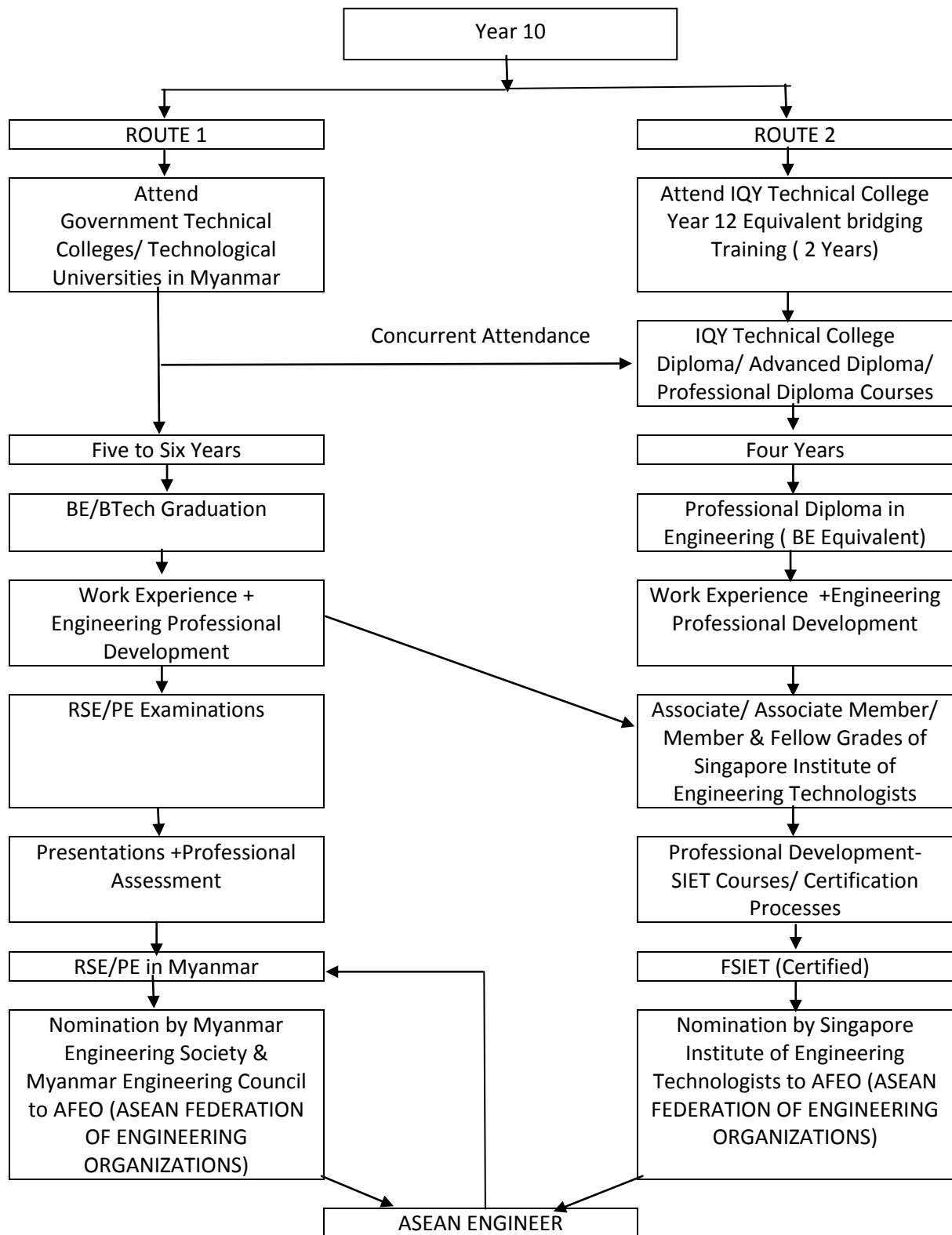


ROUTE TO ASEAN PROFESSIONAL ENGINEER



Note (1) Myanmar Engineering Council has the rule for Foreign Engineer with Registration in ASEAN Countries to grant Temporary PE.

Note (2) Reciprocal Recognition of AFEO Member Countries

Program Details—See below

IQY Technical College /STC Technological University

Authorized Training Centre of Singapore Institute of Engineering Technologists for ASEAN Engineer Registration

www.highlightcomputer.com

e-Learning Scholarship Programs

Entrance Qualifications

- Relevant Year 12 Level School Leaving Certificate
- Diploma/ Advanced Diploma from Technical Institutes/Colleges /Universities

Course	Duration	International Recognition
Diploma/ Advanced Diploma in Management Bachelor of Business	1 to 2 Years 3 to 4 Years 1 to 2 Years for Diploma holders	IPBTM-Institute of Professional Business Managers For admission as Associate Member & Member Grades
Diploma/ Advanced Diploma in Engineering (Electrical, Mechanical, Civil, Computer, Renewable Energy) Bachelor of Engineering /Professional Diploma in Engineering (Electrical, Mechanical, Civil, Computer, Renewable Energy)	1 to 2 Years 3 to 4 Years 1 to 2 Years for Diploma holders	SIET-Singapore Institute of Engineering Technologists For admission as Associate, Associate Member & Member Grades
Diploma/ Advanced Diploma in Information Technology Bachelor of Applied Science (Information Technology)	1 to 2 Years 3 to 4 Years 1 to 2 Years for Diploma holders	IISEM- International Institute of Science, Engineering & Management For admission as Associate Member & Member Grades

Enrolment Procedure

- Fill the application form from the following download link
www.highlightcomputer.com/scholarship.doc
- Attach all your qualifications
- Send it to iqytechnicalcollege@gmail.com
- No fees is payable for enrolment, tuition ,downloading the lessons from internet & academic transcripts sent in electronic format.
- Small amount of fees is payable to send the DVD containing the lessons on request & to issue the final award